

## Transfer-friendly WestConn makes completing your degree easy!

Going from a two-year to a four-year degree program is a smart move.

Choosing a university with comprehensive programs and a transfer process that is clear, quick and offers one-on-one help is even smarter.

### To transfer to WestConn, you'll need:

- a 2.0 GPA or better to be considered\*
- official transcripts from every college or university you've attended
- a WCSU application filled out and sent (with application fee) to our Office of Admissions

### Upon admission, you'll receive:

- complete course-by-course evaluation of your transfer credits
- information packet letting you know exactly what to do next
- academic advisement so that you can discuss, in detail, the requirements of your degree program
- an invitation to participate in WestConn's early registration process

\*some academic programs may require higher cumulative GPA

*"After a year at a college in Albany, New York, I decided to transfer. I had heard a great deal about the music program and professors at WestConn, so I applied here. When I came for my audition, I felt like I fit in — and eventually this became my home away from home."*

Laura Neville '08  
Old Lyme, Conn.



### About WestConn

With a history that spans more than a century, the school is part of the Connecticut State University system, which recently received an infrastructure infusion of more than \$150 million. So not only is WestConn more beautiful than ever, but — much more importantly — it is a university primed to develop the talents of tomorrow's career professionals.

### Our two Danbury campuses offer:

- library, athletic and performance facilities
- student centers with eateries, clubs and organizations
- observatories, planetarium
- residence halls, recreation facilities
- transportation between campuses

### Four schools

Here at WestConn you'll find the "program fit" that's right for you within our Ansell School of Business, School of Arts & Sciences, School of Professional Studies or School of Visual & Performing Arts.



*"After the Navy and two years at a community college, I transferred to WestConn. My passion is in IT creation ... I knew I needed more training in programming languages. Here at WestConn, my professor inspired me to write graphics programs and join a computer association."*

Todd Milano '08  
Ridgefield, Conn.

### WestConn at Waterbury

Located on the Naugatuck Valley Community College campus, WestConn at Waterbury offers completion programs for:

- Bachelor of Business Administration (B.B.A.) in management, emphasizing the practical application of management principles and theory; and
- Registered Nurse to Bachelor of Science (B.S.) in nursing, open to nurses who hold current RN licensure in any state. The program provides clinical experience and introduces holistic nursing practices as well as expanded pharmacological and diagnostic concepts.

With state-of-the-art computer labs, nursing labs and classrooms as well as bookstore access, WestConn-at-Waterbury offers opportunities for busy, career-minded students to complete their degrees.

### Great opportunity for community college students!

WestConn can accept up to 75 credits from two-year schools, 90 credits from four-year schools, or 90 credits combined. Still registered full-time at your two-year college? Go ahead and register for up to two WestConn courses each semester at *no additional cost!* An easy way to work towards your four-year degree.

### Graduate programs for the real world

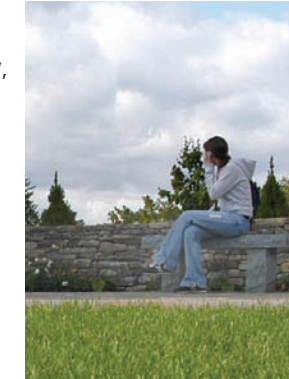
Is graduate school your goal? Our Division of Graduate Studies and External Programs offers advanced-degree programs in areas such as nursing, education, justice & law, health administration and arts & sciences. M.B.A., M.F.A. in Visual Arts, M.F.A. in Professional Writing and M.A.T. programs are also offered. *You can even earn an Ed.D. in Instructional Leadership at WestConn!*

### Points of pride

- scholars program
- internship programs
- job placement service
- career development center
- accredited childcare center

### Friendly faces, helpful attitudes

Our Admissions staff members understand the complexity of changing schools — from purely practical concerns like tuition costs and earned credits to considerations regarding facilities, programs, faculty, services and extra-curricular activities. Have questions? They have the answers!



*"I transferred here in my sophomore year. WestConn was less expensive with smaller class sizes. I could live at home and commute, and I also got to know my professors personally. At WestConn, I felt that I was more than just a number in a lecture hall."*

Jennifer Hunt '08  
Brookfield, Conn.

### For more information

The Admissions Office is located in Old Main 203 on WestConn's Midtown campus. They may be reached by calling (203) 837-9000 or toll-free at (877) 837-WCSU. You may also e-mail questions or information to [transferadmissions@wcsu.edu](mailto:transferadmissions@wcsu.edu).

For graduate program information, call the Division of Graduate Studies at (203) 837-8243 or visit online at [gradadmissions@wcsu.edu](mailto:gradadmissions@wcsu.edu).

If you're interested in WestConn at Waterbury, please call them directly at (203) 596-8777 or visit [www.wcsu.edu/waterbury](http://www.wcsu.edu/waterbury).

Directions and maps of the campuses may be found online at [www.wcsu.edu](http://www.wcsu.edu).

