



Western Connecticut State University
Newman News 2/27/11

where...
*“Cor ad Cor Loquitur-
Heart Speaks to Heart.”*

Sunday Masses

5 PM.....Alumni Hall.....Midtown Campus

Weekday Masses (Monday thru Thursday)

12:00 PM.Newman Center Chapel

NEWMAN CENTER HOURS

www.wcsu.edu/catholic

Mon-Wed. - 10am to 9:30pm

Thurs-Fri. 10am to 5pm

CLOSED WEEKENDS

Staff

Fr. Brad Heckathorne OFM Conv. heckathorneb@wcsu.edu

Michele Hossan-Office Manager hossanm@wcsu.edu

Student Interns

D'Andre Fontanelle

Julia Guertin

Amy Kelley

Newman Center Phone #

(203) 744-5846

CCM Office SC211

(203) 837-3240



Readings Next Sunday

9th Sunday in Ordinary Time

Deuteronomy 11:18, 26-28, 32

Psalm: 31

Romans 3:21-25, 28

Gospel of Matthew 7:21-27

NEWMAN DINNER

Funded by SGA

Wednesday, March 2nd

5pm – 7pm

Newman Center

Menu: Rice Krispie Chicken,
Parmesan Green Beans, Rice
Dessert: Rice Krispie Treats



Newman Club

E-Board Meeting

Wednesday, March 2nd

7:30pm

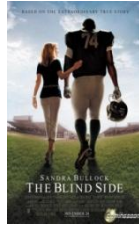
Newman Center

ALL ARE WELCOME!!



**Sunday,
February 27th
Newman Club
Pizza and
Movie Night
6pm – Newman Center**

“THE BLIND SIDE”



NOTICE

The Newman Center will be closed on
Tuesday, March 8th
This is International Women’s Day and we will be
traveling to NYC to attend events at the
United Nations.

CHRIST, KIDS & COOKING

**Friday, March 4th
5:30 – 8:00pm
For more Information contact
Amy Kelley at
kelly043@connect.wcsu.edu or
203-744-5846**

**WEDNESDAY, MARCH 9TH
ASH WEDNESDAY**



**Mass at 12 noon
In Main Room of
Newman Center**

**If you cannot attend Mass,
ashes will be distributed
throughout the day.
Schedule to be announced.**

SCAVANGER HUNT

**Wednesday, March 16th
Details to be announced**

Newman Club Retreat

**April 15th – 17th
Seton/Neumann Center
Details to follow**