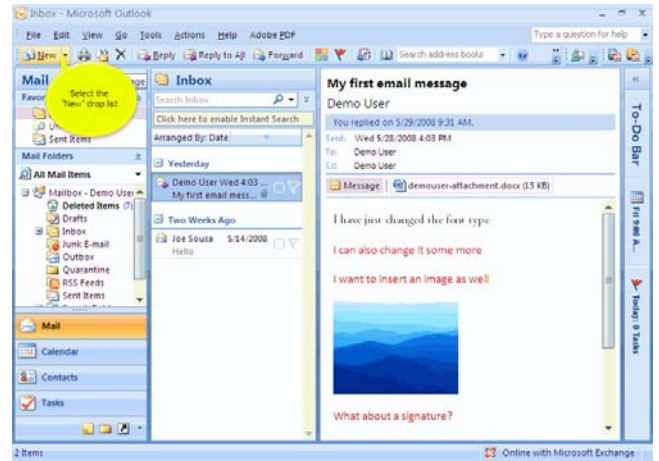
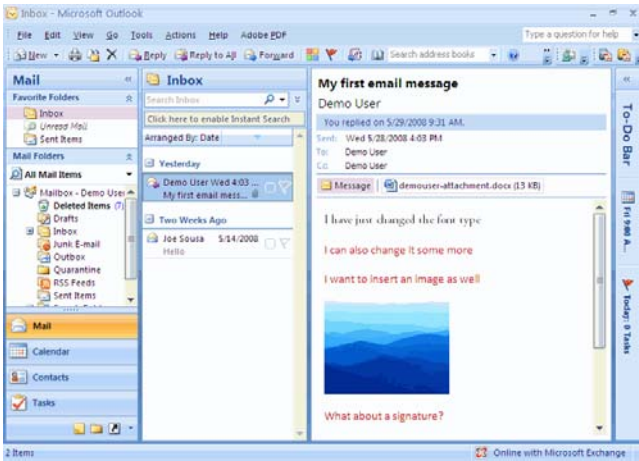


Scene 1

Scene 1



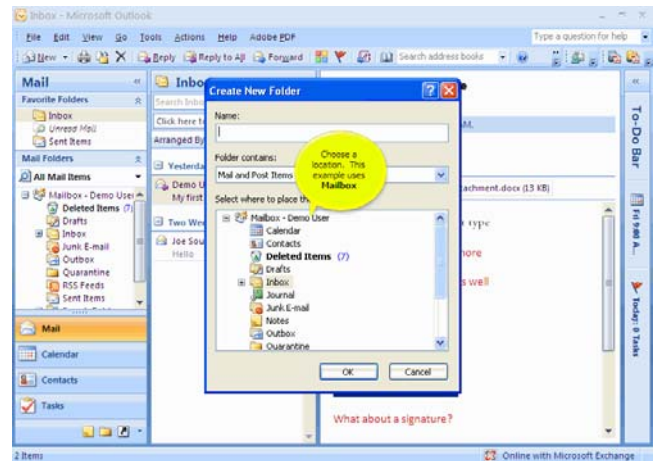
Select the "New" drop list

Scene 1

Scene 1

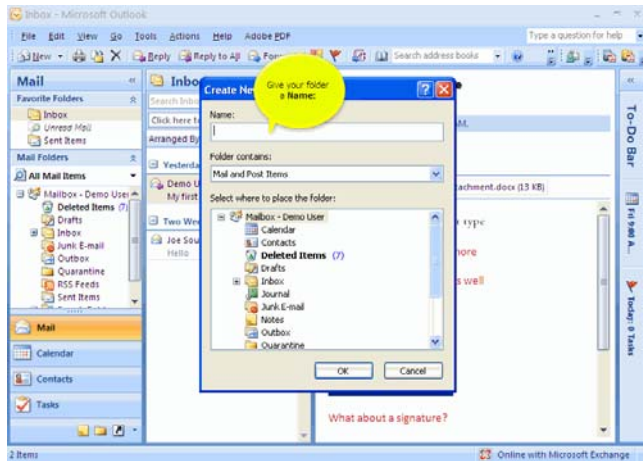


Select Folder



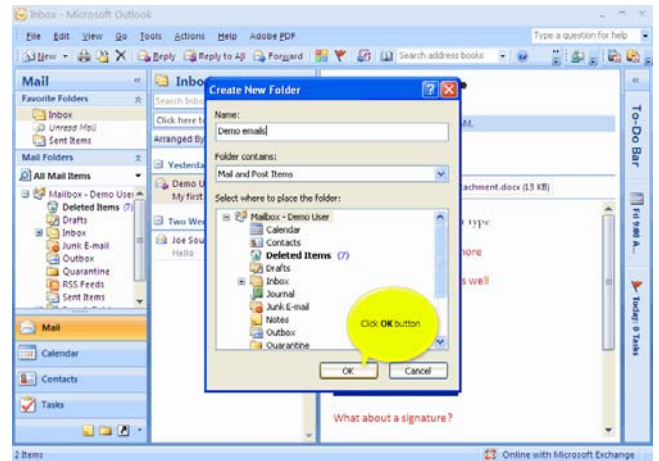
Choose a location. This example uses Mailbox

Scene 1



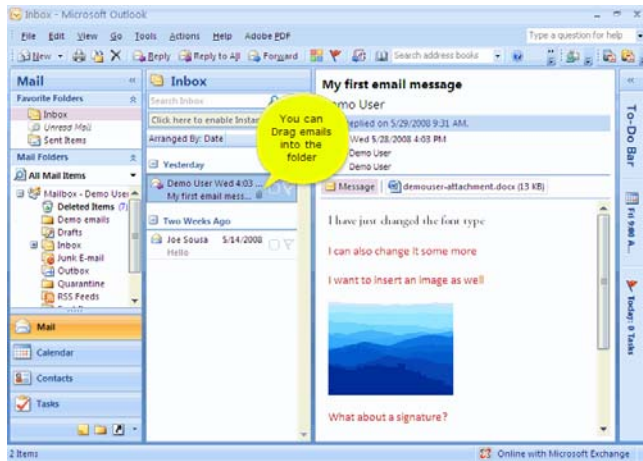
Give your folder a Name:

Scene 1



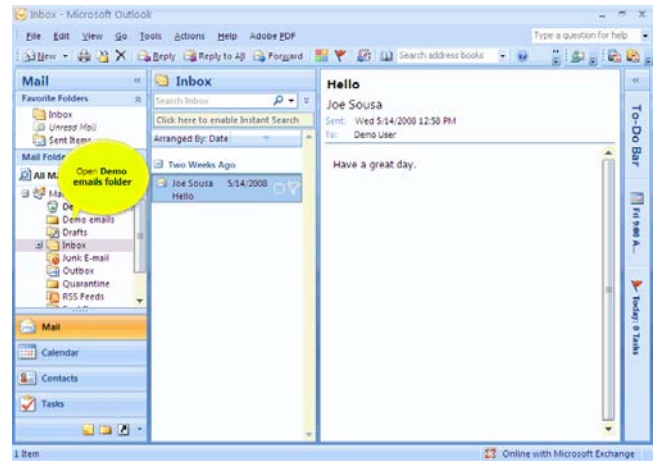
Click OK button

Scene 1



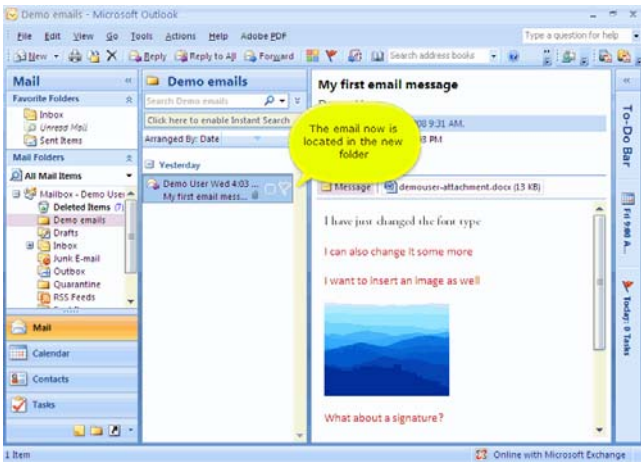
You can Drag emails into the folder

Scene 1



Open Demo emails folder

Scene 1



The email now is located in the new folder