

# ELEMENTARY EDUCATION

[Elementary Education Profile](#)

[Sample Résumés](#)

[Research Resources](#)

[What You Can Do NOW](#)

[Related Career Paths](#)

[Job Search Engines](#)

[Salary Information](#)

[Associations](#)

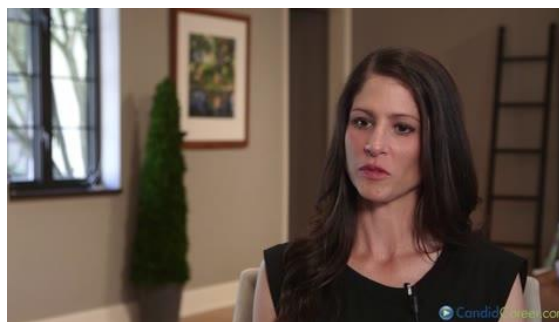
## ELEMENTARY EDUCATION PROFILE

According to the Bureau of Labor Statics, employment of kindergarten and elementary school teachers is projected to grow 7 percent from 2016 to 2026, about as fast as the average for all occupations. Rising student enrollment should increase demand for kindergarten and elementary teachers, but employment growth will vary by region. The number of students enrolling in public kindergarten and elementary schools is expected to increase over the coming decade, and the number of classes needed to accommodate these students should rise. As a result, more teachers will be needed to teach public kindergarten and elementary school students.

[WCSU Elementary Education Occupational Outlook Handbook](#)

## RELATED CAREER PATHS

The career paths listed below are only a sample of the opportunities one may consider. They have been taken from the Bureau of [Labor's Occupational Outlook Handbook](#) and the [O\\*Net Online](#). Some career paths may require additional education and training. To gain more understanding of the different career paths, take a look at [Candid Career](#), where you can watch testimonials of people doing exactly what you might want to pursue.



Career and Technical Education Teachers	Childcare Workers
Elementary and Middle School Principal	High School Principal
High School Teacher	Instructional Coordinators
Librarians	Middle School Teachers
Postsecondary Teachers	Preschool Teachers
School Counselors	Social Workers
Special Education Teachers	Teaching Assistant

## RÉSUMÉ SAMPLES & HELP

For a guide, and list of sample résumés, please visit our virtual résumé tool at <https://www.wcsu.edu/careersuccess/resumes/>. This is where you will find sample résumés, download our fillable résumés template, and find the cover letter & résumé checklist to ensure you are on the right track. Whether you are applying directly to a person, or an applicant tracking system (ATS), there are things you will need to know for your résumé to be recognized by the company's database. Use the checklist we provide and always proofread for perfection. Remember, your résumés and cover letters are the first writing samples any employer will ever see from you. You need to make sure it is perfect. Don't risk it, and come visit one of our Career Peer Leaders, who can help you. We are available Monday through Friday, either virtually or in person, anytime between 9 am to 5 pm. If you would like information, or to set an appointment, please contact the Career Success Center at [careersuccess@wcsu.edu](mailto:careersuccess@wcsu.edu).

## **JOB SEARCH ENGINES**

Prepare for interviews, compare salaries and get company reviews with a free student account from [Glassdoor](#). Simply click the link and sign up with your student email address.

[CT Reap](#)

[K12 Job Spot](#)

[Higher Ed Jobs](#)

[School Spring](#)

[Teachers for Teachers](#)

## **RESEARCH RESOURCES**

[Connecticut State Department of Education](#)

[Chronical of Higher Education](#)

[TeachingCertification.com](#)

[United States Department of Education](#)

## **SALARY INFORMATION**

[Teacher Portal](#)

[Early Childhood Education Salary Information](#)

## [Education Week](#)

### **WHAT YOU CAN DO NOW**

Join a professional society or association related to your area of interest.

[Read and understand how to get teaching certification in the state of Connecticut.](#)

Volunteer for WCSU's Vita Program

Volunteer for [Junior Achievement](#) in your community

### **ASSOCIATIONS**

Associations are a great way for college students, recent graduates, and career changers to enhance personal and professional development, opportunities to build credibility, and many networking avenues that can't be found anywhere else. Associations also offer drastically reduced membership rates for current students so NOW is the time to join.

[American Association for Employment in Education \(AAEE\)](#)

[American School Counseling Association \(ASCA\)](#)

[Association for Childhood Education International \(ACEI\)](#)

[National Association for the Education of Young Children \(NAEYC\)](#)

[National Association of Early Childhood Teacher Educators \(NAECTE\)](#)

[National Child Care Association \(NCCA\)](#)

[National Education Association \(NEA\)](#)