

EVERY
Thursday
8:00pm

Midtown Coffeehouse

Spring 2018 Schedule

Colonial
Corner



January 18th Christian Mortera

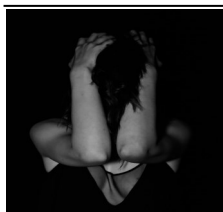
Christian is a singer-songwriter from Newtown, CT who is also a student at WCSU studying music and audio productions. His genre is a mix of soul, jazz, R&B, pop and his influences range from Allen Stone, Amy Winehouse, Brian McKnight to the old greats like Donny Hathaway, Marvin Gaye, Tower of Power & Bobby Caldwell. He wants his music to impact those listening and have them feel "a stirring in their soul".

Shane and Emily are a pop/acoustic/folk duo who incorporate many different elements of diverse genres into their original music. Starting out three years ago in the Tampa Bay area, the duo now travels the country playing universities, theme parks (such as Disney & Busch Gardens), bars (such as the Hard Rock Cafe) and beach restaurants throughout the Florida coast.



January 25th Shane & Emily

PAC Sponsored



February 1st Open Mic: MANIFESTATION

An art gallery, depicting anxiety through photography, opens at 7pm, Open Mic sign up starts at 7:30pm, Open Mic kicks off at 8pm, and featured performer "Savy Soul" will follow! Open Mic will consist of unfiltered emotion through song, spoken word, storytelling, and comedic effect about experience with anxiety.

If you like Jazz you are sure to like a performance by WCSU's Music Students. Enjoy the music, the atmosphere, and some of the food and beverages provided free of charge.

February 8 WCSU Student Jazz



February 15 All Night Open Mic

This is the night to show off your talent. Perform yourself (sing a song, play your instrument, do a sketch, tell a joke, or read a poem or short story), or, if you are not the performer type, convince a friend to go and come in support.

Singer/songwriter Eleanor Kleiner and multi-instrumentalist Elie Brangbour bring a deep-reaching sound, haunting vocals and vivid lyrics. This Franco/American duo have been captivating audiences around the world since meeting at music school in London.

February 22

Whispering Tree



This is the night to show off your talent. Perform yourself (sing a song, play your instrument, do a sketch, tell a joke, or read a poem or short story), or, if you are not the performer type, convince a friend to go and come in support.



March 1 All Night Open Mic

Western Improv Group is an improv group consisting of dedicated, passionate and witty WCSU students that want to make you laugh. WIG meets every Friday in the VPA from 5:00-6:30pm and welcomes both participants and spectators who want to learn and observe improv comedy at its finest.



March 8 WIG

Opening Act Frankie Becerra

March 15

SPRING BREAK NO COFFEEHOUSE

WHEN:
Thursdays
8:00pm



Midtown Coffeehouse

Spring 2018 Schedule



WHERE:
Colonial
Corner



March 22
Emily Barnes



Opening Act: Drew Mazur

Barnes is a dedicated singer-songwriter who is also a nationally touring artist. With three albums out, listeners are able to experience Barnes's world through the nostalgia of finding oneself after the inevitable darkness seeps in. Her music is honest, and raw, but you are likely to experience a quirky show.

Drew Mazur is a writer, poet, singer-songwriter, composer and teacher. Drew's songwriting combines mellow personality and intermittent angst with a jazz background, melodic indie arrangements and pensive lyrics.

This is the night to show off your talent. Perform yourself (sing a song, play your instrument, do a sketch, tell a joke, or read a poem or short story), or, if you are not the performer type, convince a friend to go and come in support



March 29th
All Night Open Mic



April 5th
Touré Richardson

At this current time where people are looking for the unexplainable "more", Black and Mild will leave you feeling like you had a "God-moment" by incorporating a variety of soulful influences that blend into an elusive and timeless medley.

Touré is currently a music major at WCSU. Singing since the age of 4 he has honed in on a gospel-soul sound when he opens his mouth. Touré sings all musical genres ranging from gospel, R&B, soul, to jazz, Broadway, blues, and even classical music. He aspires to be a successful singer songwriter.

April 12
Black and Mild

WCSU Students



April 19
TBA

More details coming soon

Imagine if John Mayer hooked up with Maroon 5 and they all went to Motown. That's the sound of Abe Parker music. Originally from Blue Rock, Ohio and has been playing guitar since he was 5. In 2012, he packed up his life and moved to Atlanta, GA. He began by playing music on the streets of Atlanta, until he got the opportunity to perform at Ragamuffin Music Hall and met a producer. Since then he has been writing and recording in his studio. Abe performs at festivals, opens for large artists, and entertains folks on the street.

April 26
PAC Westfest
Abe Parker

PAC Sponsored



May 3
The Parallel fifths
A capella

Come for a special night of a *cappella* by WCSU's all male group, "The Parallel FIFTHS". Enjoy their songs that range from barbershop to pop!

Have a wonderful Summer break!