

the Washington Art Association at Western Connecticut State University



fifteen artists one exhibition

October 18 – November 23, 2010  
Western Connecticut State University

reception October 28, 4 to 7 p.m.

**Carl Weese**  
"Fourth of July, 2009, Pittsfield, Mass."  
Pigment ink digital print, 13.5 x 20.5 inches



**Philip Grausman**  
"Crouching Figure"  
Stainless steel, 11 x 5 x 6 inches



**Eric Aho**  
"Timberline"  
Oil on canvas, 36 x 30 inches



**Lois Dodd**  
"Blue Drape, Green Lawn"  
Oil on masonite, 13 x 14 inches



**Marija McCarthy**  
"Edge of the Sea"  
Oil on linen, 22 x 30 inches



**Nancy Lasar**  
"Adagio"  
Mixed media on rag, 36 x 30 inches



**Charles Cajori**  
Untitled  
Oil on linen, 20 x 26 inches

# fifteen artists one exhibition

*the Washington Art Association at Western Connecticut State University*

**Ann Mallory**  
"Casing No. 38"  
Stoneware, 27 x 20 x 20 inches



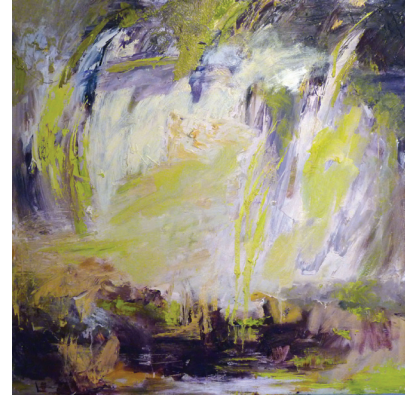
**Wolf Kahn**  
"Yellow and Blue"  
Pastel on paper, 14 x 17 inches



**Ira Barkoff**  
"Tumble"  
Oil on linen, 48 x 60 inches



**Souby Boski**  
"Storm Dunes"  
Oil on canvas, 36 x 36 inches



**Judith Petrovich**  
"Embrace"  
Silver gelatin print  
11.5 x 14 inches



**Barbara Grossman**  
"Lost Dog II"  
Oil on linen, 30 x 24 inches



**Ruth Miller**  
Untitled  
Oil on linen, 16 x 20 inches



**Elizabeth MacDonald**  
"Walls from China" (detail)  
Ceramic, 63 x 110 inches

October 18 – November 23, 2010  
reception October 28, 4 to 7 p.m.



**Department of Art**  
181 White Street  
Danbury, Connecticut 06810

## fifteen artists one exhibition

October 18 – November 23, 2010

reception with the artists October 28, 4 to 7 p.m.

gallery hours Mondays through Thursdays, noon to 4 p.m.

location Higgins Gallery  
Western Connecticut State University Midtown campus  
181 White Street, Danbury, Connecticut

**Fifteen artists one exhibition** brings 15 artists from the Washington Art Association (WAA) to the gallery at Western Connecticut State University (WCSU). The WAA was established in 1952 and is dedicated to encouraging and nurturing the study, creation and exhibition of art. This show is presented in collaboration with WCSU's Department of Art as part of its mission to bring exceptional art to our region.

Eric Aho	Nancy Lasar
Ira Barkoff	Elizabeth MacDonald
Souby Boski	Ann Mallory
Charles Cajori	Marija McCarthy
Lois Dodd	Ruth Miller
Philip Grausman	Judith Petrovich
Barbara Grossman	Carl Weese
Wolf Kahn	

